



Parkhead Primary School is committed to continuously develop our approaches to ensure equity. We received £83,130 through the Pupil Equity Fund (PEF). This summary provides an overview of how our PEF funding was used to provide a range of universal and targeted interventions and approaches.

Health and Wellbeing

- Calm Kits and safe spaces in every classroom
- Zones of Regulation
- Drawing & Talking Therapy and Sand Therapy
- Small group work with a focus on building resilience and self esteem
- Personalised support packages based on individual sensory needs



Literacy

- Employed PEF Lead & PSW to carry out interventions
- Purchased ICT resources – Clicker 8, IDL, Talking tins
- Purchased PM writing resources
- ACE dictionary CLPL for staff and children
- Purchased Language link resources
- Reciprocal Reading CLPL for staff
- Individual and group work targeted interventions
- A range of Literacy resources to support interventions

Numeracy

- Numicon Intervention Programme
- Maths through Stories
- Individual and group work targeted interventions
- Whole school approach to Number Talks
- Introduced Numeracy working Walls
- Pre-teaching vocabulary in all classes
- Purchasing a range of Numeracy resources to support interventions

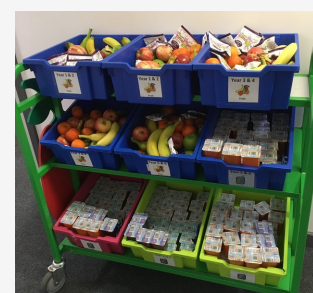


Pupil Participation & Engagement

- Class Teacher employed to support learners to develop understanding of neurodiversity
- Breakfast Club & Soft Start resources
- Attendance support for targeted families
- Early Years Practitioner focusing on high quality experiences in P1
- Life skills curriculum for learners who require a unique learning pathway
- Outdoor learning opportunities such as John Muir Award

Participatory Budgeting & Cost of the School Day

- Free healthy snack for all
- Free Uniform
- Subsidised trips and after school clubs
- Support with referrals for Clothing Bank, Toy Appeal etc
- Pre-loved clothing accessible to all
- Halloween / Christmas jumper swap shop



Plans for Session 2023/24

We plan to continue with a number of targeted interventions across the school:

- Literacy, Numeracy & HWB interventions delivered by PSWs
- Further develop Numicon Intervention Programme
- Provide and promote family learning and engagement opportunities
- Building Fact Fluency in P1 and P2
- Provide after school clubs and extra curricular opportunities